



MOTOROLA

MC35 Operating System Update Directions

Required Hardware:

Please Note: Most of the required hardware was included in your MC35 Kit.

MC35 with either 1X or 2X battery

AC Wall Plug (Included in the MC35 Box)

- Vendor Model #: PSM11R-050
- Motorola Kit: KT-93761-01R (Includes AC Power Supply with 4 adapter plugs for US, EU, UK, and AU)

Cable: USB to mini USB (Included in MC35 Box)

- Motorola Part Number: 50-11G55-001R
- Also known as Microsoft ActiveSync cable

SD Memory Card

- You need at least 128MB of free space
- Purchased Separately

Required Software:

- Microsoft ActiveSync 4.5 or later
- For the latest MC35 Software visit:
 - <http://support.symbol.com/support/product/MC35.html>
- On our support site you will find the MC35 Operating System Software in a zipped file.
 - Inside the "Zipped" file will be something similar to MC35_G_S06070700.nb0



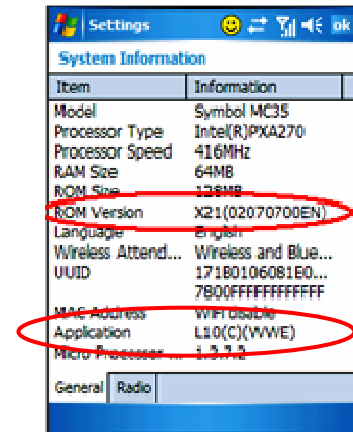
WARNINGS

1. This procedure will erase ALL Data. This includes settings and any post factory loaded applications
2. Please Remove your Cellular SIM card (found under the battery)

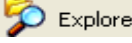


How to check your current Operating System version?

- 1) Go to Settings, which can be found in the START MENU
- 2) Go to the System Tab on the bottom of the screen.
- 3) Click the Icon named, System Information
- 4) The combination of ROM version & Application indicate the version
 - a. For example this screen shot's OS is X21-L10C



Preparing the SD Card

- 5) Make sure Microsoft ActiveSync 4.5 or later is installed on your computer.
 - If not installed please visit Microsoft's website: <http://www.microsoft.com/windowsmobile/activesync/default.mspx>
 - Please refer to Microsoft's website for ActiveSync installation and user guides.
- 6) Download the latest MC35 OS software file to your computer
 - Visit <http://support.symbol.com/support/product/MC35.html>
 - Unzip file. It will be similar to MC35_G_S06070700.nb0
 - **Remember where you stored the "unzipped" file on your computer.**
- 7) Power on the MC35.
- 8) Insert an SD card with at **least** 128MB of free space into the slot on top of your MC35.
- 9) Connect the MC35 to your computer using the mini USB to USB cable.
 - If your MC35 was not setup with an ActiveSync partnership, read the dialog box and hit cancel.
 - Else a Microsoft ActiveSync window similar to "Figure 1" should open.
- 10) On your computer you can access the SD card by clicking on  Explore in the ActiveSync window.
 - Select "My Windows Mobile-Based Device"
 - Select "Storage Card"
- 11) Copy the unzipped MC35 OS software file from your computer to the **root/base directory** of the Storage Card.
 - Any standard Window's Copy & Paste operation will work.

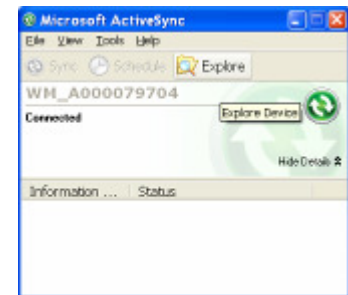


Figure 1

Preparing the MC35 for Download

- 1) Disconnect the USB to mini USB cable.
- 2) Power on the MC35 with the AC Wall Plug
- 3) Remove your Cellular SIM card located underneath the battery.
 - Make sure you re-install the battery



Starting the Operating System Update

- 1) Simultaneously Press and **Hold** the “Lower Right Hand Side Button” and “Power Button” and then Press and Release the Reset button with your stylus.

Note: Do not release the first 2 buttons until you see the MC35 Eboot Screen.



Figure 2

- 2) The MC35 will perform a variety of Checksums and Flash Read Write cycles.
- 3) Wait for and follow the Prompt instructions: “Please pull out the SD card and Reboot.” To reboot press the Reset button on the Left hand side with the stylus.

Congratulations!

You have successfully updated the MC35 Operating System! At this time, you may insert your SD card and SIM card back into your device.

Follow the on-screen prompts to setup your device to your personal preferences.

You can validate the update by following the first procedure in this document, “How to check your current Operating System version?”

